



The WaterWise Rainscape Rebate

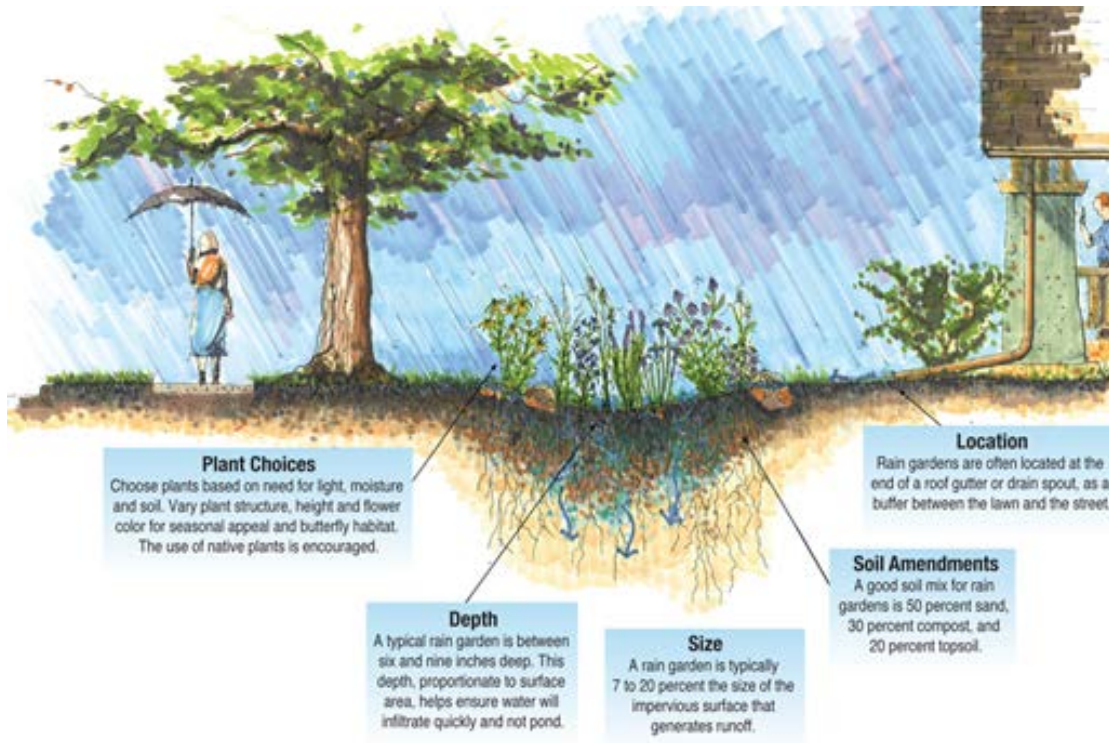
February 15, 2018

Christopher Charles – Conservation Program Specialist



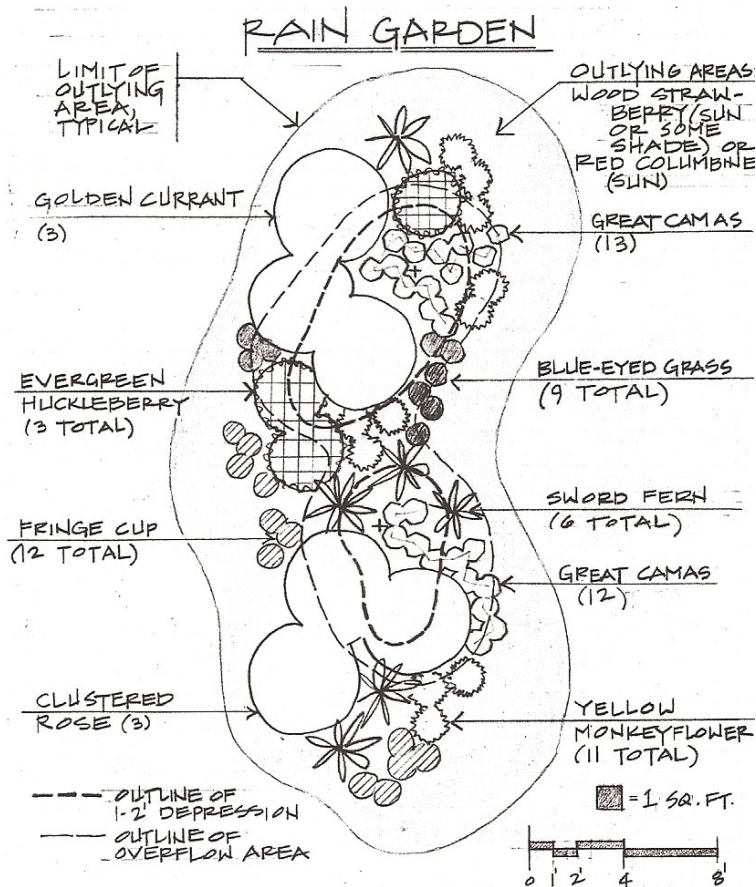
WaterWise Rainscape Rebate Program

- Homeowners and schools may receive up to \$500 (\$0.30/sq. foot -- 100 sq. foot min.) for installing landscape features such as rain gardens, berms, swales, terraces, and porous pavement that direct and retain rainwater on the property



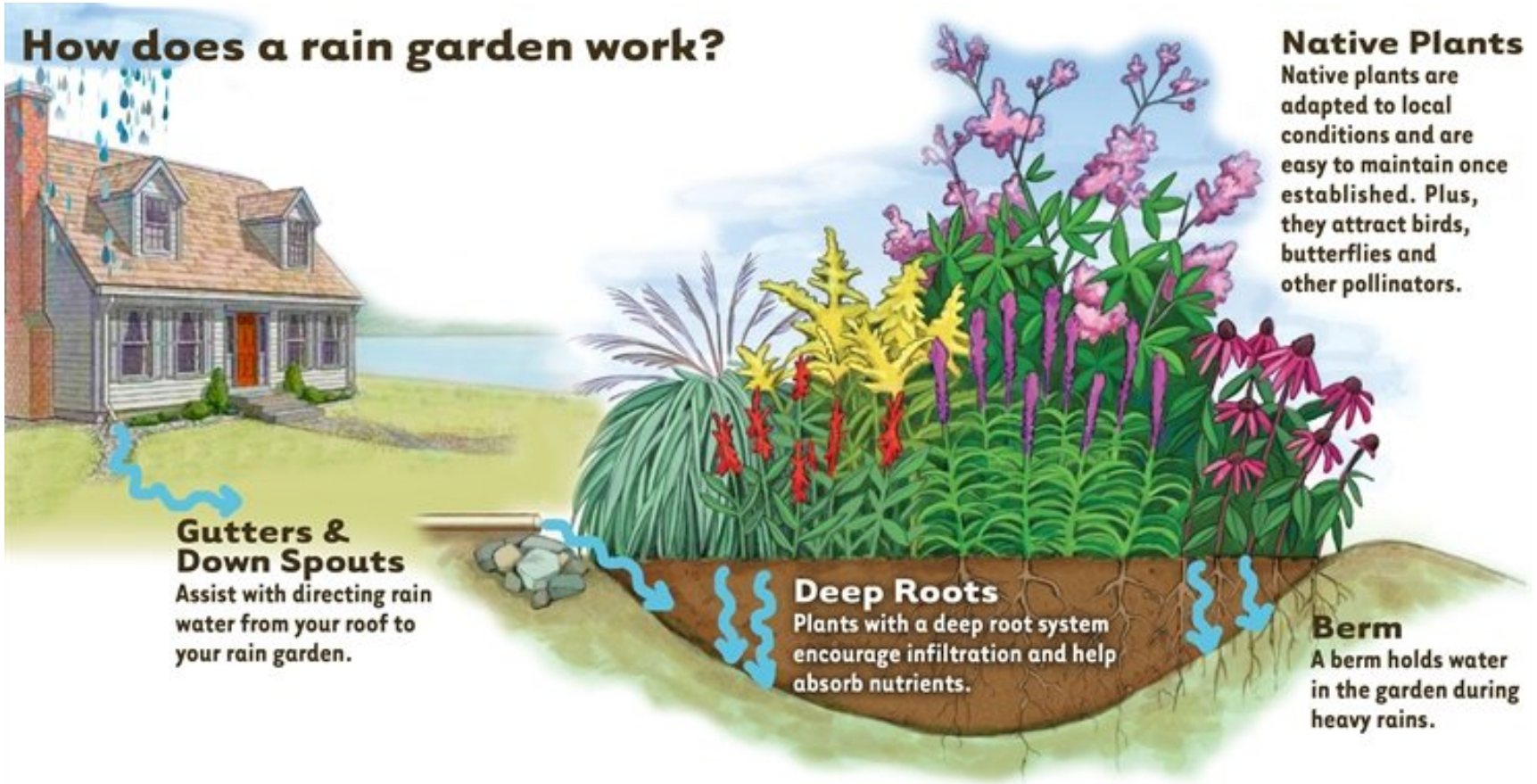
Eligibility

- Austin Water residential/school customer or qualifying water provider
- Size of conversion area (100sqft min)
- Have not started work on the conversion (must be accepted into the program first)



Rain Gardens

How does a rain garden work?



Gutters & Down Spouts

Assist with directing rain water from your roof to your rain garden.

Deep Roots

Plants with a deep root system encourage infiltration and help absorb nutrients.

Berm

A berm holds water in the garden during heavy rains.

Native Plants

Native plants are adapted to local conditions and are easy to maintain once established. Plus, they attract birds, butterflies and other pollinators.

Rain Gardens



Rainwater Terracing



- For yards with more slope

Berms and Swales



Porous Pavement



Examples from past participants



Examples from past participants



Examples from past participants



More information on Raingardens:

<http://www.austintexas.gov/raingardens>

Application for the WaterWise Rainscape
Rebate and other water conservation rebates:

[http://www.austintexas.gov/departement/water-
conservation-rebates](http://www.austintexas.gov/departement/water-conservation-rebates)

My Contact

Chris Charles – Conservation Program Specialist

LI # 20725, TCLP 745

- Website: www.waterwiseaustin.org
- Phone: 512-972-0366
- Email: christopher.charles@austintexas.gov